

GORWIND Advisory Board meeting

WP4 results – sociological survey

September 21, 2012

Ain Kull, Anda Ikauniece

University of Tartu; Latvian Institute of Aquatic Ecology

Ain.Kull@ut.ee; anda.ikauniece@lhei.lv

Descriptive data on respondents

Feature	Estonians	Latvians
No. of questionnaires	Approx. 380	Approx. 550
Average age	47	43
Family size	3,16	3,39
Education	Secondary	Secondary
Average income	561 – 840 EUR	561 – 840 EUR
Interest in the wind energy (0-5)	3	3

Similarities (14 of 42 parameters)

Parameters (0-5)

Birds will get killed – 1,8

Create new fish habitats - 0,9

Increase value of nearby real estate – 1,1

Turbines are a sign of progress – 3,4

Personal compensation - more “no”

Suitability of distance 5 km – 2,5

Suitability of distance 10 km – 2,8

Suitability of distance 15 km – 2,9

Suitability of distance 20 km – 3,1

Suitability of park size 10 turbines – 2,9

Suitability of park size 5 turbines - 3

Suitability to landscape – stony beach – 2,9

Suitability to landscape – reed – 2,9

Suitability to landscape – junipers – 2,7



Differences – statements with negative mood

Parameter (0-5)	Estonians	Latvians
Fish will disappear	1,6	1
Noise	2,73	1,93
Unsuitable to landscape	2,36	1,97
Deter tourists	1,60	1,03
Create wind	1,12	0,80
Produce more expensive energy	2,36	1,56
Flickering	2,12	1,30
Decrease value of nearby real estate	3,05	2,21
Consent to pay more for wind energy	0,20	0,41

Differences – statements with positive mood

Parameter (0 – 5)	Estonians	Latvians
Attract tourists	1,77	2,67
Make landscape more interesting	2,10	2,74
Produce cheaper energy	2,34	3,06
Produce clean energy	3,94	3,73

Differences – other statements

Parameter	Estonians	Latvians
Should the state subsidize wind energy	0,72	0,80
Minimal distance from home on land (km)	6,68	9,97
Minimal distance from coast (km)	6,38	9,58
Maximum number of turbines in the nearest wind park (km)	6,14	12,81
Noiseproof windows	0,11	0,28
Switch off turbine	0,06	0,09
Community compensation	0,41	0,30
Free electricity	0,76	0,62

Differences - suitability

- Park size

Parameter (0-5)	Estonians	Latvians
Suitability of park size 20 turbines	2,15	2,60
Suitability of park size 15 turbines	2,51	2,85

Differences – landscape suitability (1)



Estonians

2,51

Latvians

2,16

Differences – landscape suitability (2)



Estonians

3,10

Latvians

3,32

Differences – landscape suitability (3)



Estonians

2,88

Latvians

3,14

Differences – landscape suitability (4)



Estonians

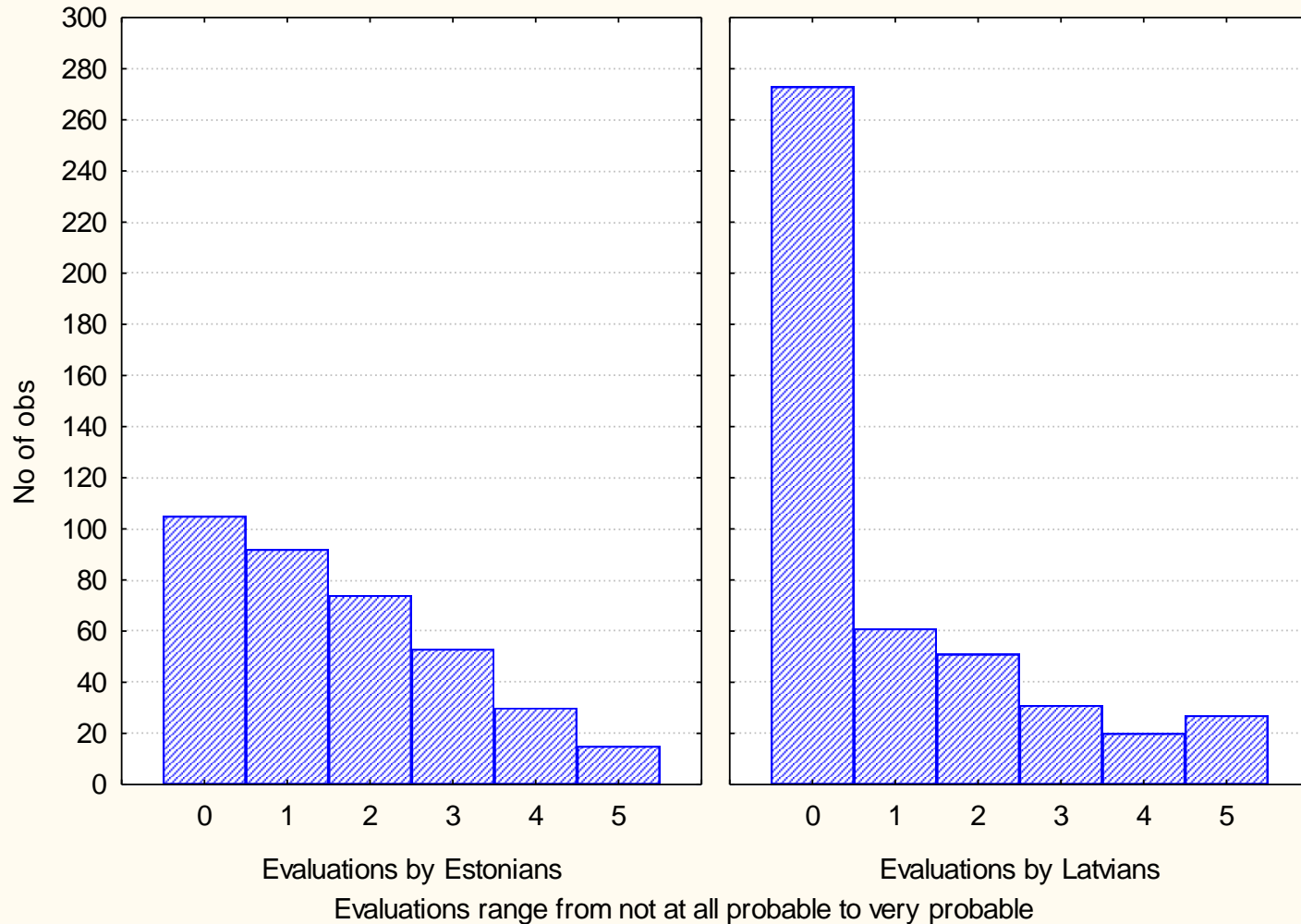
1,95

Latvians

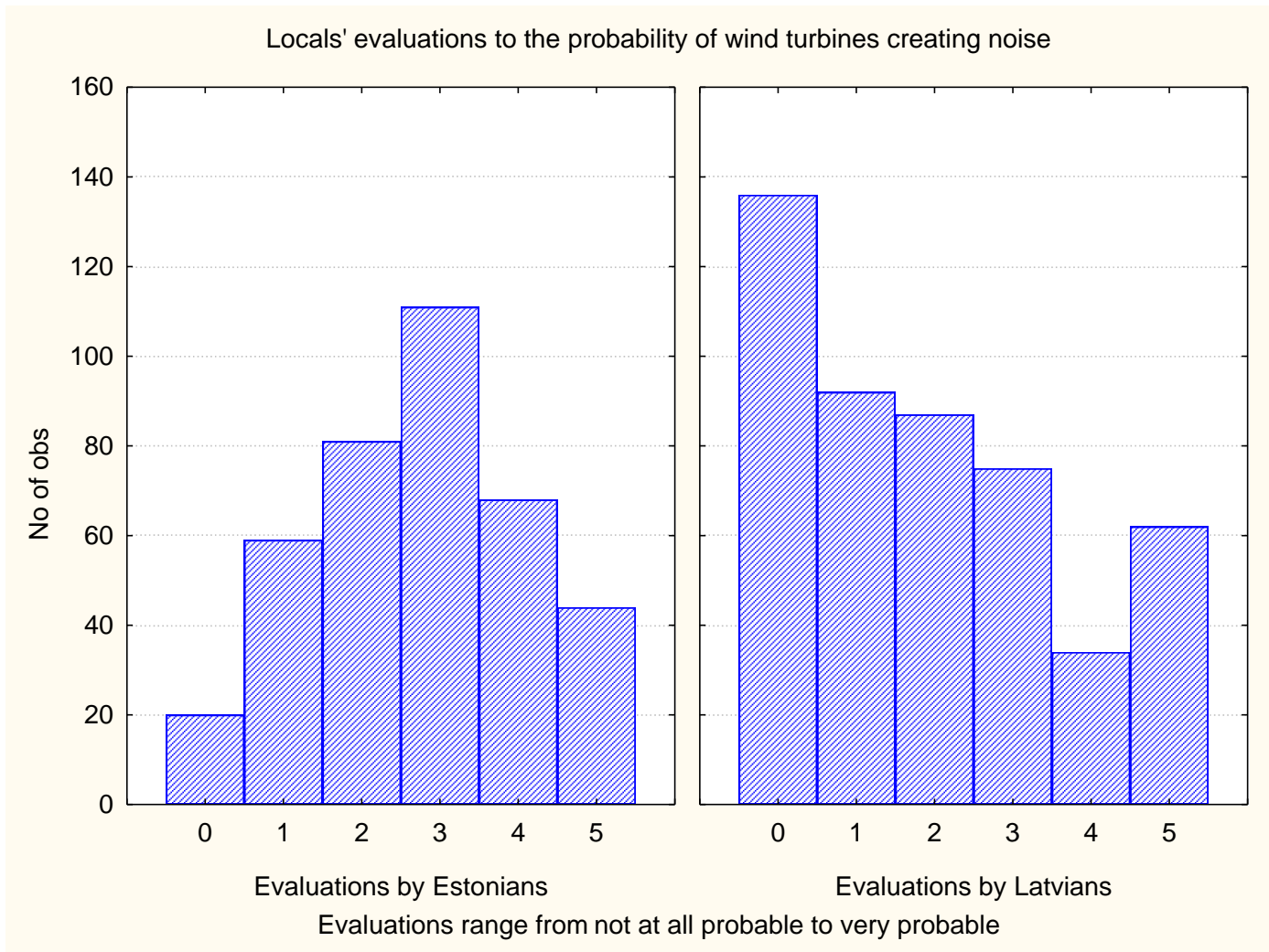
2,66

Range of opinions on 'fish will disappear'

Evaluations to the probability that fish would disappear because of the wind turbines



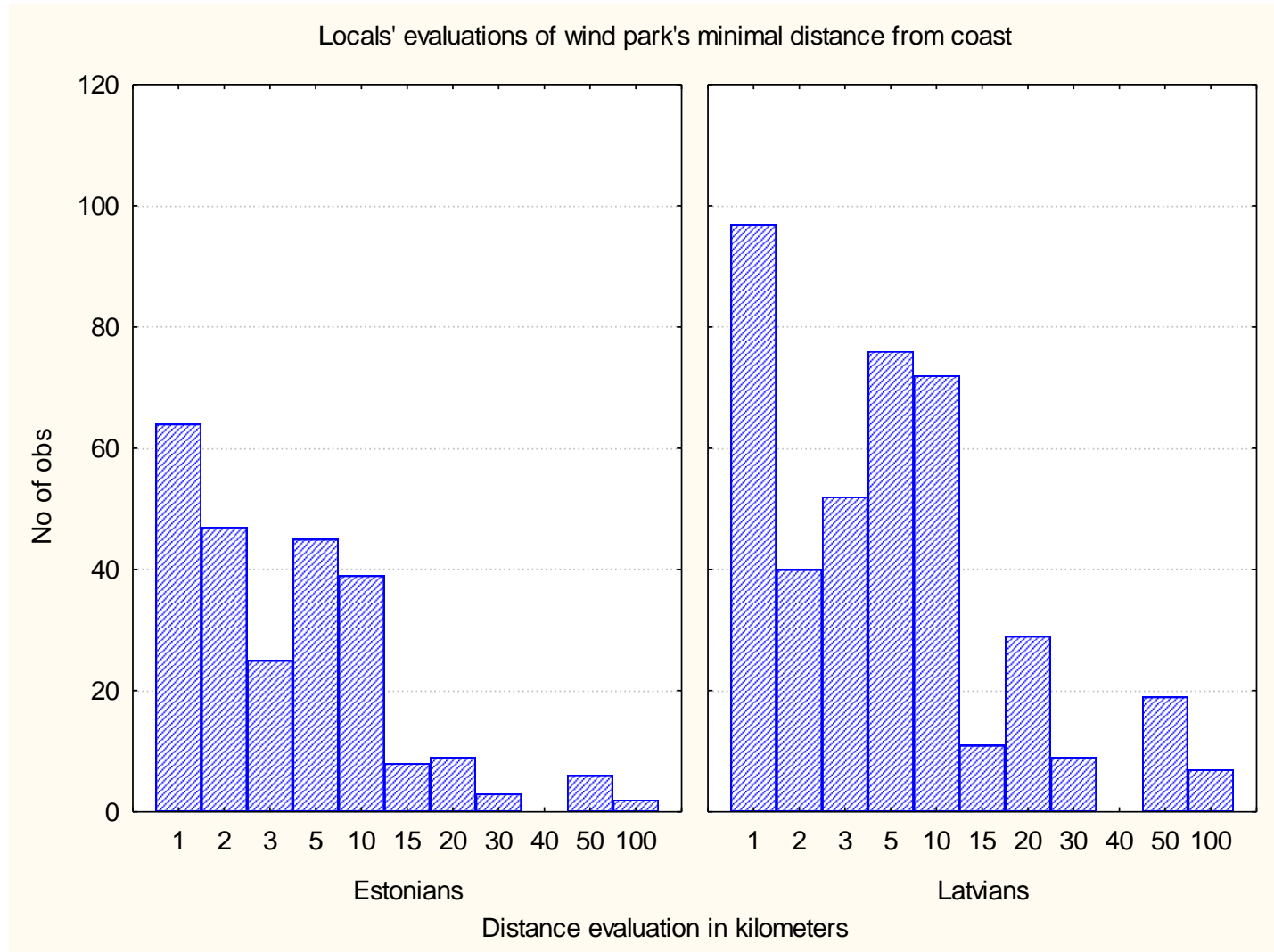
Range of opinions on 'turbines are making noise'



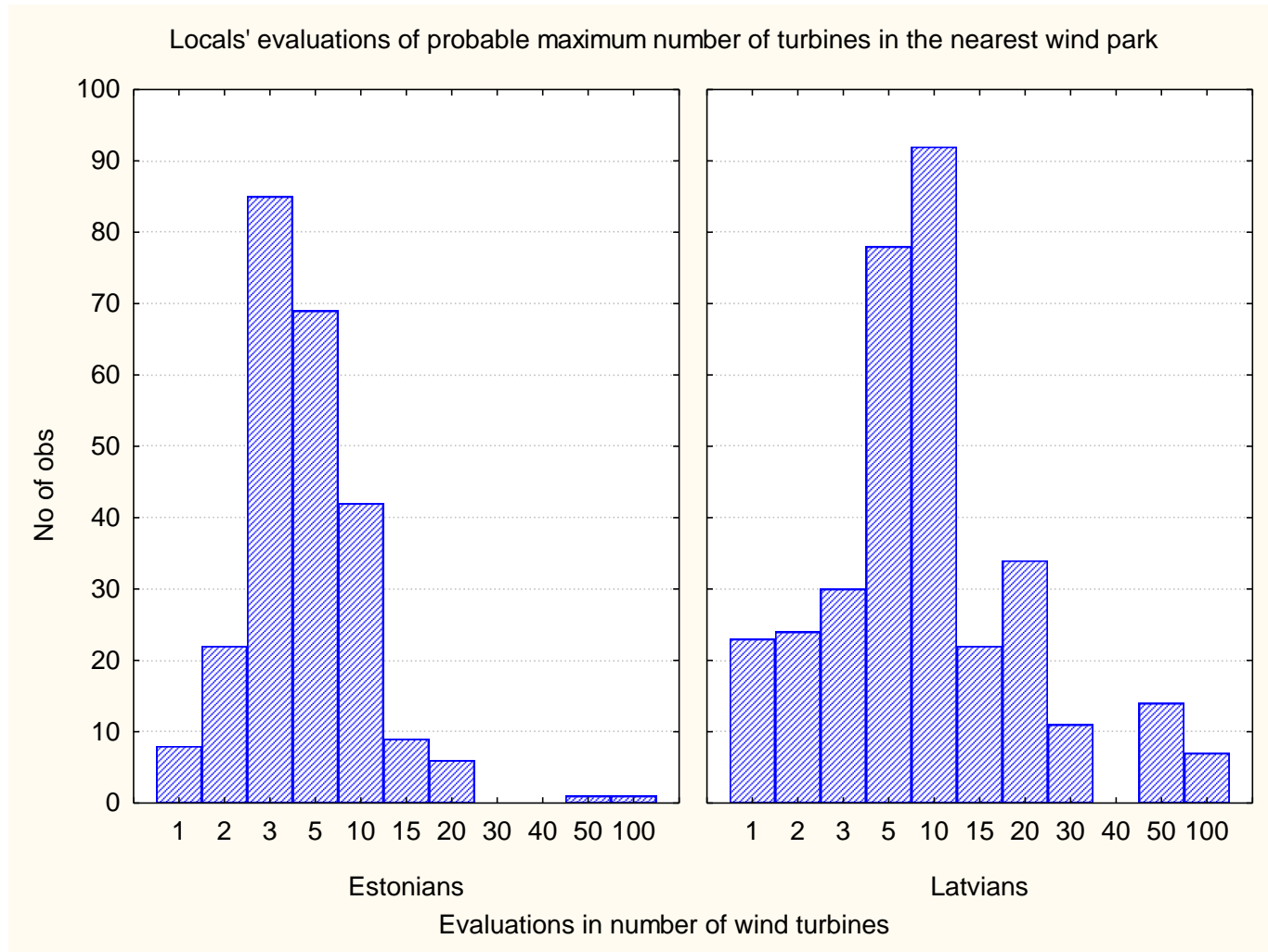
Range of opinions on distance from home



Range of opinions – distance from the coast



Range of opinions – number of turbines



Previous encounter with turbines

